

Ms. Susan White
Utilities Connections Management Limited
Mainetti House
Bedwell Road
Wrexham
LL13 0TS

Networks/SPN/ 8500268887
Your Ref:

2nd August 2023

Dear Susan,

Re: Swanstree Avenue, Sittingbourne Kent, ME10 4QE
Project Reference Number: 8500268887

BUDGET ESTIMATE FOR DIVERSIONARY WORK

Thank you for your recent enquiry regarding the diversionary work at the above site.

Based upon the information provided with your enquiry, a preliminary assessment of the work required to meet your requirements has been made. Based on this assessment, the following assets will be affected:

- LV underground mains

The budget estimate for altering the above apparatus is **£55,000.00**.

Work Included in This Budget Estimate

This budget estimate is to divert the existing underground LV cables on site so the customer can work on the development.

Please note if you would like a site visit to discuss the relocation you will need to request a formal quotation.

The price would depend on site conditions, on obtaining any necessary legal consents and the route of the diverted cables.

Work NOT Included in This Budget Estimate

The Budget Estimate shown above does not include the price of providing any electricity connections. If requested, the cost of these works will be provided separately.

The disconnections of any live cable feeding the current site.

Please note that the Budget Estimate provided has been created from a quick desk top assessment, and is intended as a guide only. If the price of the diversionary work is critical to your decisions or financial commitment to this project, you are strongly advised to consider the option of asking UK Power Networks to provide an estimate for the work.

Should the work proceed, UK Power Networks reserves the right to charge an amount based on the actual cost of the work carried out, and this may vary from any estimate provided.

Application for an Estimate

If you decide to proceed with this project, UK Power Networks will be pleased to provide an estimate for the diversionary work on receipt of your detailed plans indicating your exact requirements. You must also complete and return the attached Application for the Provision of Electricity Connections Form to the address shown on the form, setting out your exact requirements.

Important Information

I enclose a plan which shows the location of UK Power Networks apparatus in the vicinity of the above address.

The position of UK Power Networks' existing apparatus shown on any drawings is believed to be correct. UK Power Networks accepts no responsibility in the event of any inaccuracy and should any other cables be discovered on site they must be considered LIVE and DANGEROUS at all times and must not be cut, re-sited, suspended or generally interfered with unless specifically authorised on site by UK Power Networks' Project Manager.

All the cables are UK Power Networks property and remain so even when made dead and abandoned and any such cable exposed should be reported to my Engineering Department for collection and authorised disposal.

In the interest of safety to personnel, equipment, and UK Power Networks apparatus, it is imperative that the approximate position of the underground cables is established before any excavation is commenced. The positions are to be obtained by the use of electronic cable locators and to then be confirmed by careful trial holing, using hand held tools. UK Power Networks CANNOT UNDERTAKE THIS WORK FOR CONTRACTORS. UK Power Networks CableWatch team will be able to advise you in this respect and they can be contacted on free phone 0800 056 5866.

As you are aware the responsibility for site safety of your employees, your contractors and other site visitors rests with the manager on site. All works must be carried out in accordance with the Health & Safety at Works Regulations 1974 and its relevant Regulations, including the Electricity at Work Regulations 1989. It is recommended that you obtain H.S.E. booklet HS(GS)47 which deals with safe digging practises.

Where overhead equipment is either evident on site or shown on UK Power Networks' plans it must be considered live and dangerous at all times. All work in the locality should be carried out in accordance with Document GS6, issued by the Health and Safety Executive, and the Electricity at Work Regulations 1989 must be observed. Work must not be commenced on site until UK Power Networks have attended and agreed the necessary precautions.

Where 132,000 volt cables are present a site meeting will be required to agree the safe method of working in the vicinity of these cables.

UK Power Networks does not have details of equipment owned by National Grid, British Rail, other utilities or Companies or local authorities, and you should contact them to obtain about other cables and lines which may be in the vicinity.

CDM

The Construction (Design and Management) Regulations 2015 apply to most construction work. This information, with details of any particular site hazards, must be provided before UK Power Networks can start design work on this project. Further information about the role



of the Client under this legislation is contained in Approved Code of Practice “Managing Health and Safety in Construction” – ISBN 978-0—7176-6223-4.

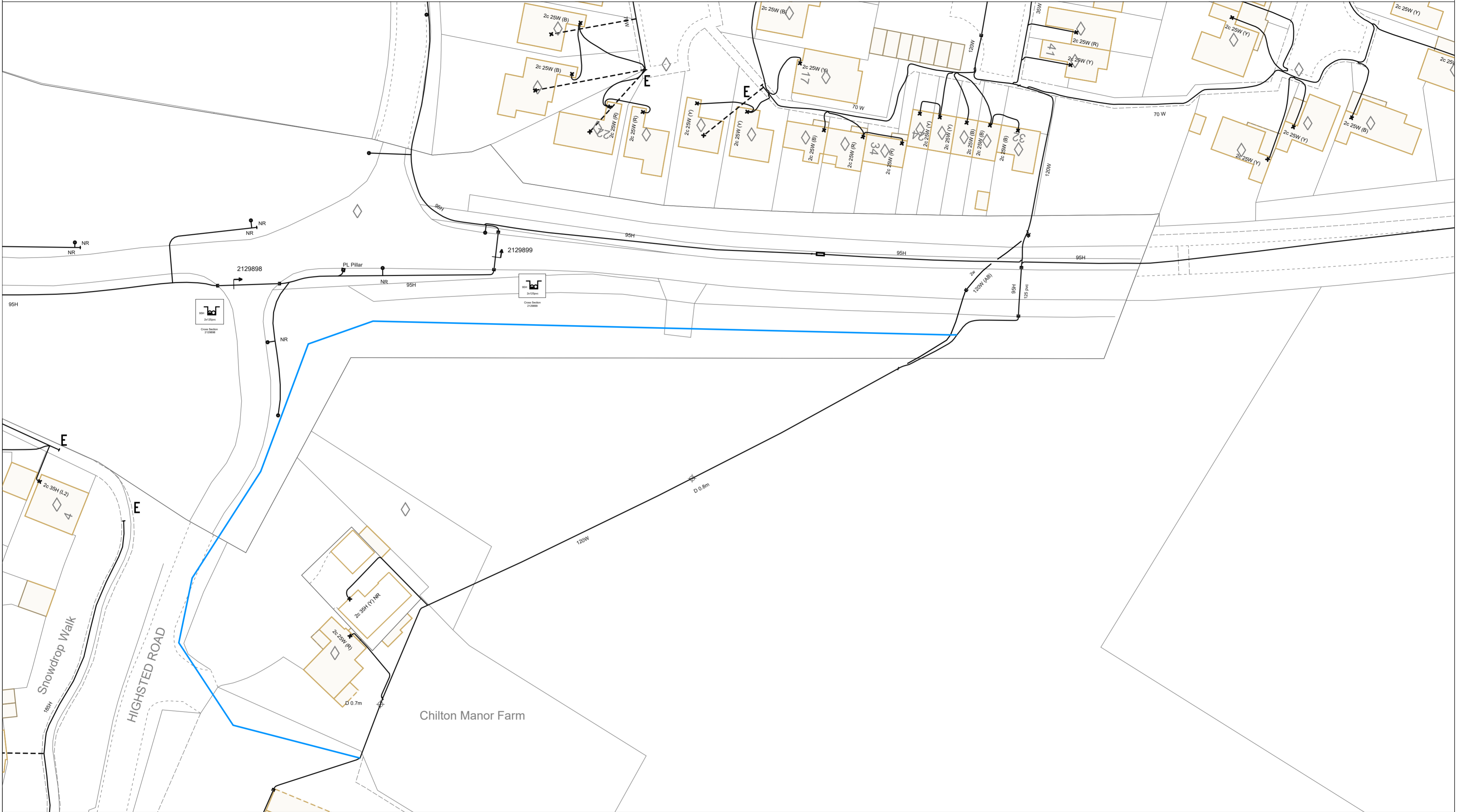
Should you require any further information or advice, please contact me on the number shown below.

Yours Sincerely

A handwritten signature in black ink, appearing to read 'Hannah', enclosed in a thin black rectangular border.

Hannah Farnham-Glass
Trainee Connections Project Designer
Tel: 07784216163
Email: Hannah.farnham-glass@ukpowernetworks.co.uk

Your feedback is important to us, and we would be grateful if you would complete a short questionnaire to tell us about the service that you have received in relation to this Budget Estimate. The customer relations team do contact a small number of customers by telephone as well. You can remain anonymous if you prefer when you provide this feedback. Please follow this link <https://www.surveymonkey.com/s/F3XHXGS> to complete the survey; it will take you only a few minutes. Thank you in advance for your help.



Description	Existing	Proposed	1. The position of the apparatus shown on this drawing is believed to be correct but the original landmarks may have been altered since the apparatus was installed. 2. The exact position of the apparatus should be verified - use approved cable avoidance tools prior to excavation using suitable hand tools. 3. It is essential that trial holes are carefully made avoiding the use of mechanical tools or picks until the exact location of all cables have been determined. 4. It must be assumed that each property and item of street furniture has an electricity supply. Service cables shown only where known. 5. All cables must be treated as being live unless proved otherwise by UK Power Networks. 6. The information provided must be given to all people working near UK Power Networks plant & equipment. Do not use plans more than 3 months after the issue date for excavation purposes. 7. Please be aware that electric cables/lines belonging to other owners of licensed electricity distribution systems may be present and it is your responsibility to identify their location.
LV Cable or Line			<p>1. UK Power Networks does not warrant that the information provided to you is correct. You rely upon it at your own risk.</p> <p>2. UK Power Networks does not exclude or limit its liability if it causes the death of any person or causes personal injury to a person where such death or personal injury is caused by its negligence.</p> <p>3. Subject to paragraph 2 UK Power Networks has no liability to you in contract, in tort (including negligence), for breach of statutory duty or otherwise for any loss, damage, cost, claims, demands, or expenses that you or any third party may suffer or incur as a result of using the information provided whether for physical damage to property or for any economic loss (including without limitation loss of profit, loss of opportunity, loss of savings, loss of goodwill, loss of business, loss of use) or any special or consequential loss or damage whatsoever.</p> <p>4. This plan has been provided to you on the basis of the terms of use set out in the covering letter that accompanies this plan. If you do not accept and/or do not understand the terms of use set out in the covering letter you must not use the plan and you must return it to the sender of the letter.</p> <p>5. You are responsible for the security of the information provided to you. It must not be given, sold or made available upon payment of a fee to a third party.</p>
HV Cable or Line			
EHV Cable or Line			
Approx. position			
Ductline			
Pole & Street Furniture			
Substation & Link Box			

0m 10m 20m 30m 40m 50m 60m 70m 80m

VISITING AN OPEN POINT? Please mark on this plan all locations visited and open points as found, then return updated map to your Business Unit - Thank You.

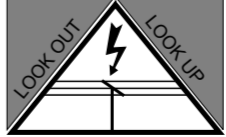
Contact UK Power Networks on 0800 056 5866 for details of EHV Cable routes before commencing work.

Maps produced at 1:2500 scale are LV Geo-Schematics which show LV mains cables and overhead lines (in some cases all voltages). Prior to carrying out excavations you must refer to the 1:500 records to determine the location of all known underground plant and equipment.

The quality and accuracy of any print will depend on your printer, your computer and its print settings. Measurements scaled from this plan may not match measurements between the same points on the ground.

Plan Provision

CHECK IT OUT BEFORE YOU DIG IT OUT
CALL 0800 056 5866
EMERGENCY- If you damage a cable or line Phone 0800 096 3766 (24hrs) URGENTLY



ALWAYS LOOK UP BEFORE YOU START WORK
Refer to HSE Guidance note GS6

Grid Ref: TQ 91147 62644
Scale: 1:500
(When Plotted at A2)
Plotted on: 02/08/2023
Plotted by: Hannah Farnham-Glass

