

- LEGEND
- 1 Light Grey render finish
 - 2 Feature yellow coated PPC aluminium window frame
 - 3 Dark grey coated PPC aluminium window frame
 - 4 White timber louvres 50mm wide Siberian larch - to avoid overlooking
 - 5 Lift overrun
 - 6 Glass balustrade
 - 7 White painted 50mm timber Siberian larch cladding
 - 8 Dark grey coated PPC aluminium balcony door frame
 - 9 Raised feature tree planter- refer to landscape plan
 - 10 Non accessible podium garden - refer to landscape plan
 - 11 Water tank - refer to drainage strategy by Heringtons
 - 12 Main access to courtyard
 - 13 Proposed car park natural ventilation shaft
 - 14 Pink metal sliding garage door
- HB Refer to Landscape drawing for detailed Landscape layout PR210.17

Revision Note & Date				Initial
Rev	Date	Note		
A	14.12.2018	Planning issue		MM
B	03.04.2019	General Amendments on side elevation following removal of one floor		MM
C	31.10.2019	Amendments following meeting with Folkestone & Hythe Council		NF

Project Number: PR210 23
 Drawing Number: 23
 Drawing Revision Letter: C

Project Title:
TONTINE STREET
 PROPOSED RESIDENTIAL DEVELOPMENT

Clients Details:
 HRS RAIL

Drawing Title:
 PROPOSED SECTION B-B

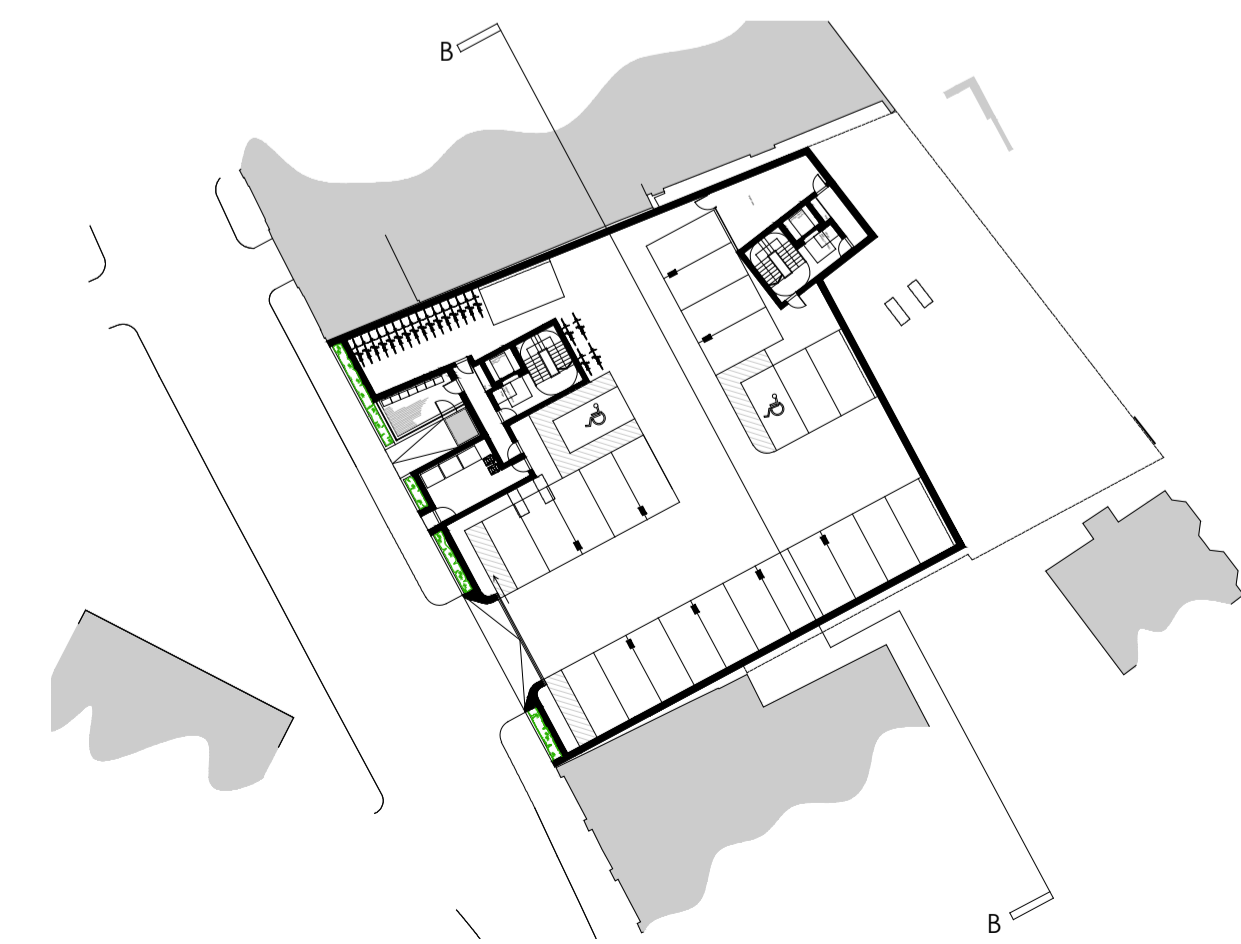
Drawing Status: Planning
 Scale: 1:100 @ A1
 Date: 14.12.2018

ON ARCHITECTURE

Canterbury Studio
 The Old Brewery Business Centre
 75 Stour Street,
 Canterbury,
 CT1 2NR

London Studio
 5 Gossamer Gardens
 Hackney Road,
 London,
 E2 9FN

info@onarchitecture.co.uk
 onarchitecture.co.uk
 01227 634334



KEY PLAN - not to scale



TONTINE STREET
 PROPOSED SECTION B-B

This drawing and the design are the copyright of ON Architecture Ltd only.
 This drawing should not be copied or reproduced without written consent.
 All dimensions are to be checked on site prior to fabrication and ON Architecture Ltd should be notified of any discrepancy.
 Do not scale from this drawing