

Our Ref: 26075879 Your Ref: LM 109528/SuC

Tuesday, 28 June 2022

Ben Evans
The Hub, 500 Park Avenue, Aztec West
Almondsbury
Bristol
BS32 4RZ

CHECKED

Dear Ben Evans

Neos Networks - Asset Network Plans

We acknowledge with thanks your request for information on the location of our assets.

We have attached a plan showing the location of Neos Networks apparatus in the proposed work area for your information. If the map provided is missing any required information e.g. a background map, then please email C2requests@neosnetworks.com who will provide a more detailed map.

If you're laying your own services, please use the map provided showing our apparatus and follow your safe dig procedures. There is no need to contact us for permission to dig or arrange any supervision.

If you have determined your works may impact our existing apparatus, then please contact alterations@neosnetworks.com for a Budget Estimate. For us to provide you with a Budget Estimate we will require the following information in order to progress your query as quickly and as efficiently as possible:

- A covering letter or details on the email
- Plans / maps showing existing & proposed conditions (min 1:500 scale and PDF format if emailed)
- Scheme cost apportionment information with confirmation of who the works principal is (the person or company funding your project)

Neos Networks will respond with a Budget Fee letter (if your scheme falls outside of NRSWA) showing the payment required to prepare a Budget Estimate.

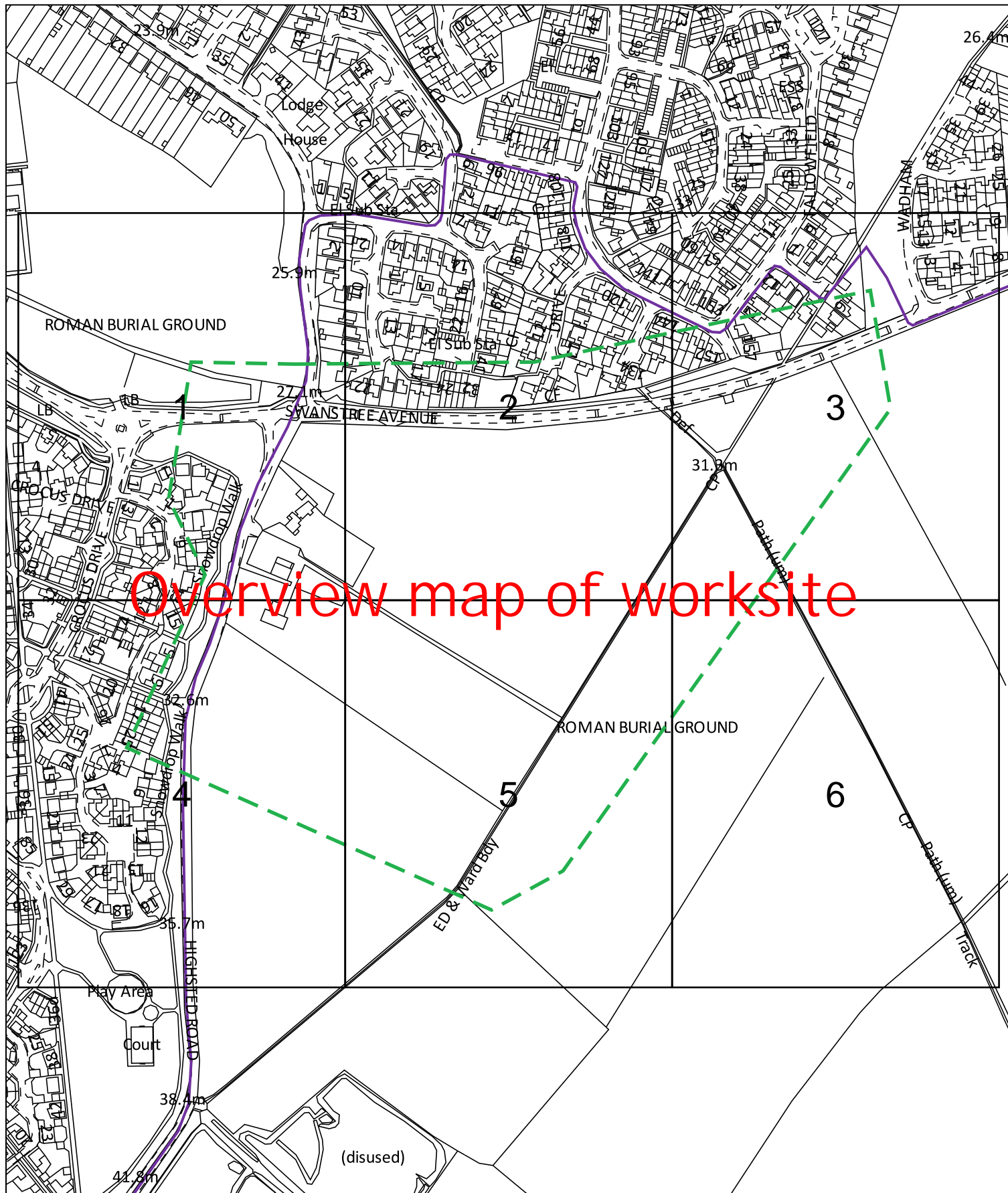
Yours sincerely

Neos Networks Team

Address: Neos Networks, 4 Penner Road, Havant, Hampshire, PO9 1QH
Telephone: 023 92 494 923
Email: C2requests@neosnetworks.com

For more information, visit our website:

<https://neosnetworks.com/our-network/plant-enquires>



Dig Sites

Area:



Line:



The quality and accuracy of any print will depend on your printer, your computer and its print settings. Measurements scaled from this plan may not match measurements between the same points on the ground.



Date Requested: 28/06/2022
Job Reference: 26075879
Site Location: 591186 162498

Requested by: Mr Ben Evans

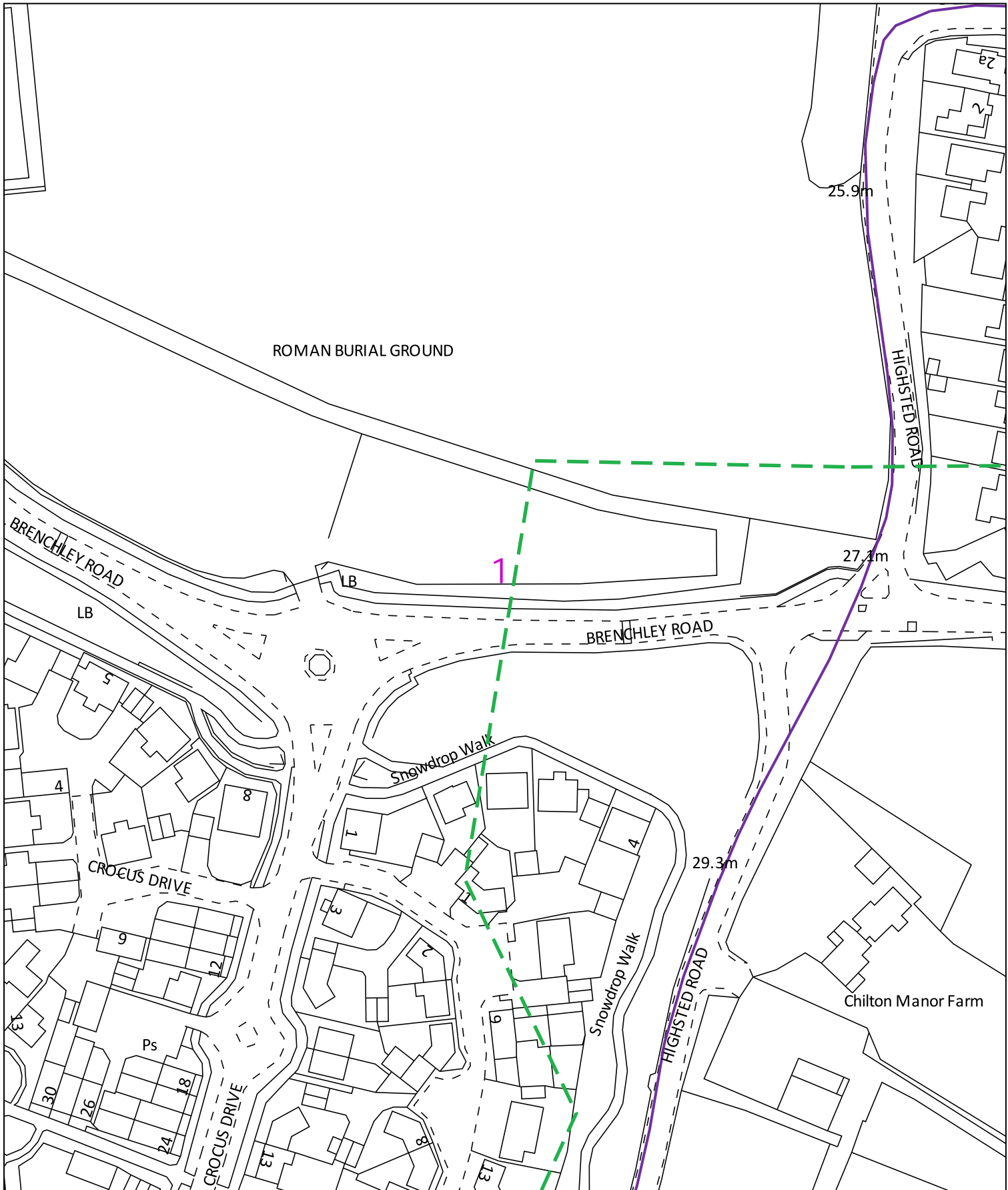
Your Scheme/Reference: LM
109528/SuC

Scale: 1:3844 (When plotted at A4)

The information on this document is proprietary and shall not be used, copied, reproduced or disclosed in whole or in part without written consent of Neos Networks. Approximate location only is shown. To determine exact location a trial hole must be dug with a Neos Networks Supervisor present. Neos Networks accept no liability for errors or omissions.

Neos Networks Underground Route **Emergency Number: 0345 305 3337**

Registered Office:
Inveralmond House,
200 Dunkeld Road,
Perth, PH1 3AQ



0 50m

Dig Sites

Area:



Line:



The quality and accuracy of any print will depend on your printer, your computer and its print settings. Measurements scaled from this plan may not match measurements between the same points on the ground.

Date Requested: 28/06/2022
Job Reference: 26075879
Site Location: 591186 162498

Requested by: Mr Ben Evans

Your Scheme/Reference: LM
109528/SuC

Scale: 1:1250 (When plotted at A4)

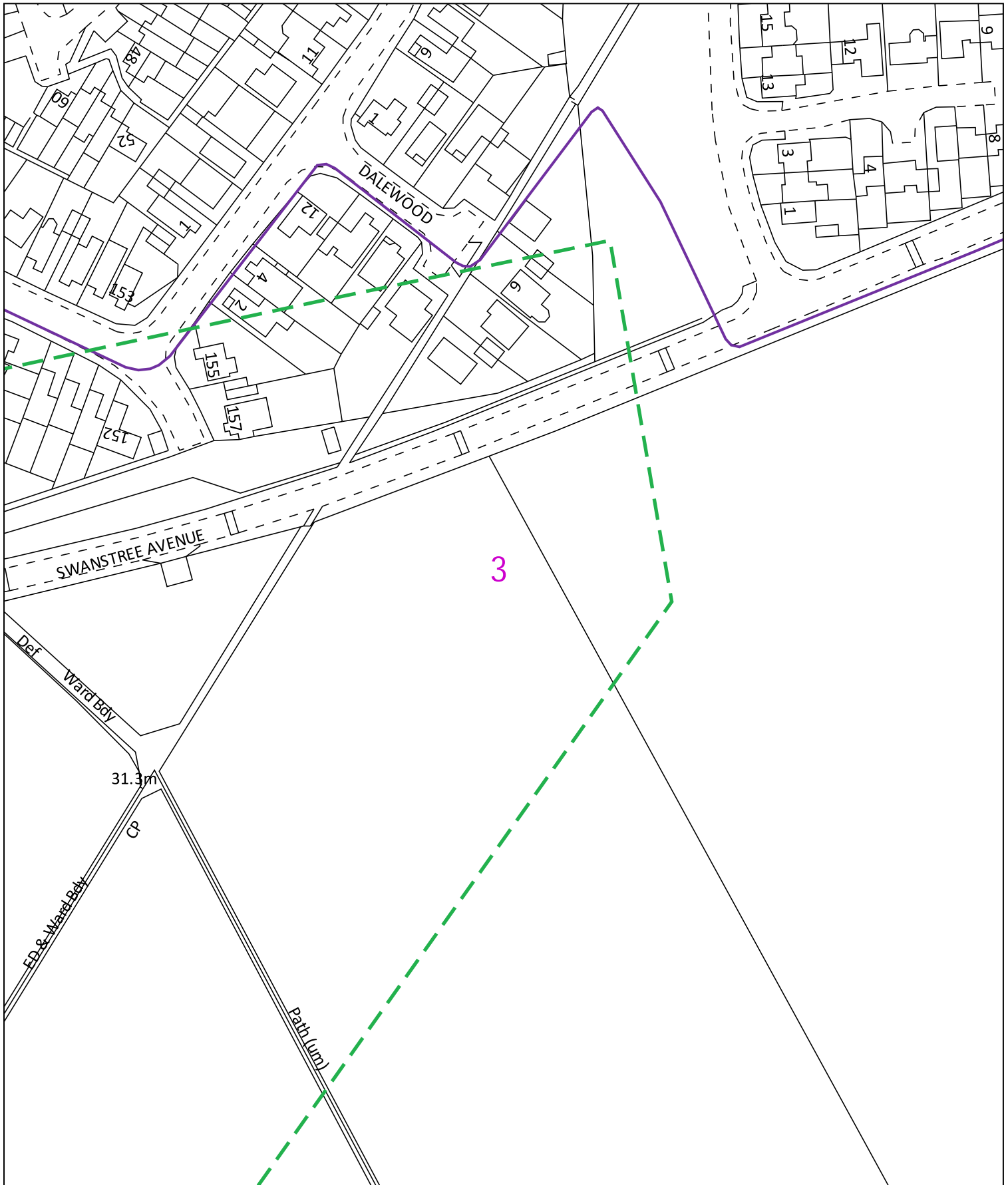
The information on this document is proprietary and shall not be used, copied, reproduced or disclosed in whole or in part without written consent of Neos Networks. Approximate location only is shown. To determine exact location a trial hole must be dug with a Neos Networks Supervisor present. Neos Networks accept no liability for errors or omissions.



Neos Networks Underground Route **Emergency Number: 0345 305 3337**



Registered Office:
Inveralmond House,
200 Dunkeld Road,
Perth, PH1 3AQ




0 50m Dig Sites Area:  Line:  The quality and accuracy of any print will depend on your printer, your computer and its print settings. Measurements scaled from this plan may not match measurements between the same points on the ground.

Date Requested: 28/06/2022
Job Reference: 26075879
Site Location: 591186 162498

Requested by: Mr Ben Evans
Your Scheme/Reference: LM
109528/SuC

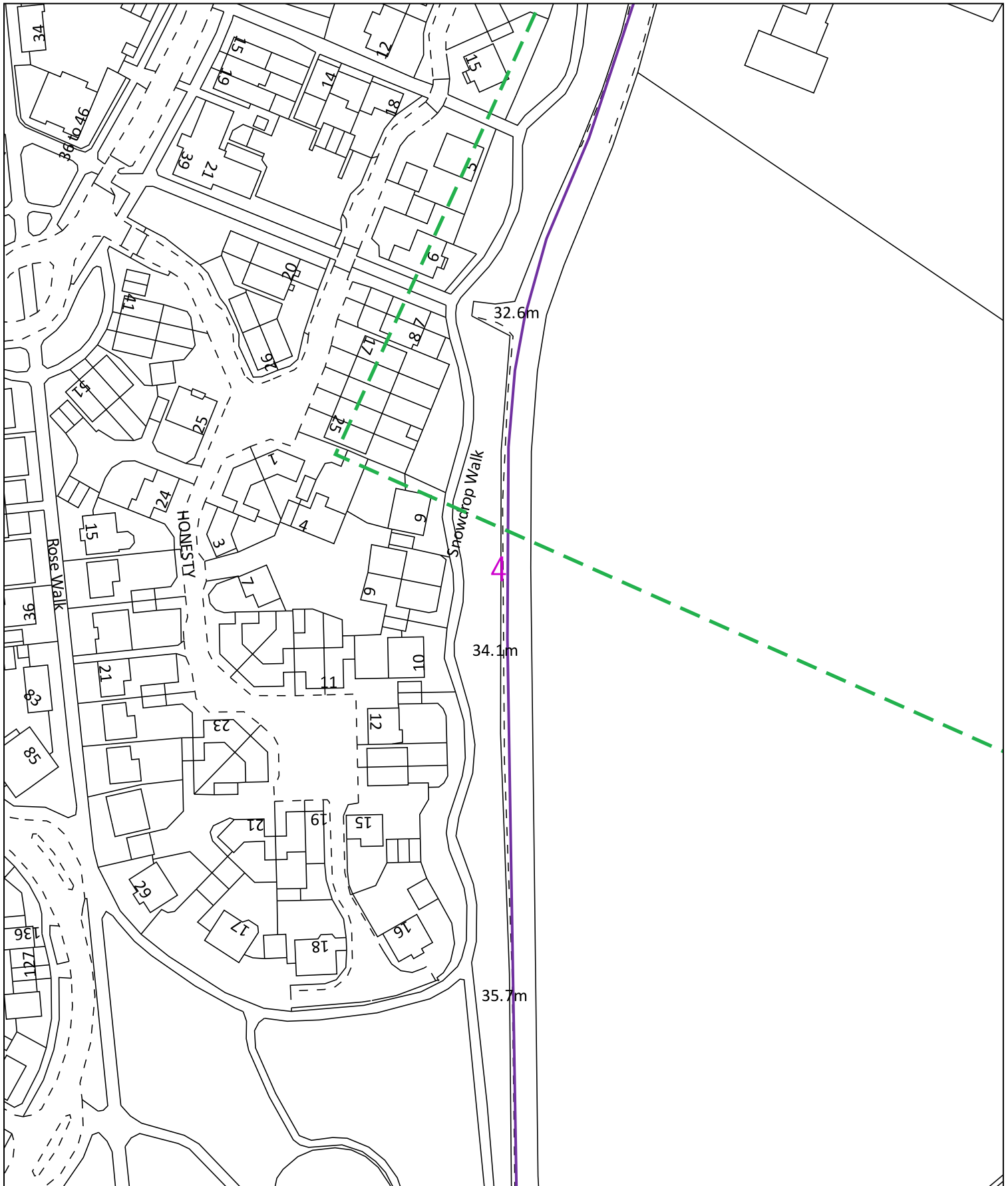
Scale: 1:1250 (When plotted at A4)

The information on this document is proprietary and shall not be used, copied, reproduced or disclosed in whole or in part without written consent of Neos Networks. Approximate location only is shown. To determine exact location a trial hole must be dug with a Neos Networks Supervisor present. Neos Networks accept no liability for errors or omissions.

 Neos Networks Underground Route **Emergency Number: 0345 305 3337**



Registered Office:
Inverlmond House,
200 Dunkeld Road,
Perth, PH1 3AQ



0 50m

Dig Sites

Area:



Line:



The quality and accuracy of any print will depend on your printer, your computer and its print settings. Measurements scaled from this plan may not match measurements between the same points on the ground.

Date Requested: 28/06/2022
Job Reference: 26075879
Site Location: 591186 162498

Requested by: Mr Ben Evans

Your Scheme/Reference: LM
109528/SuC

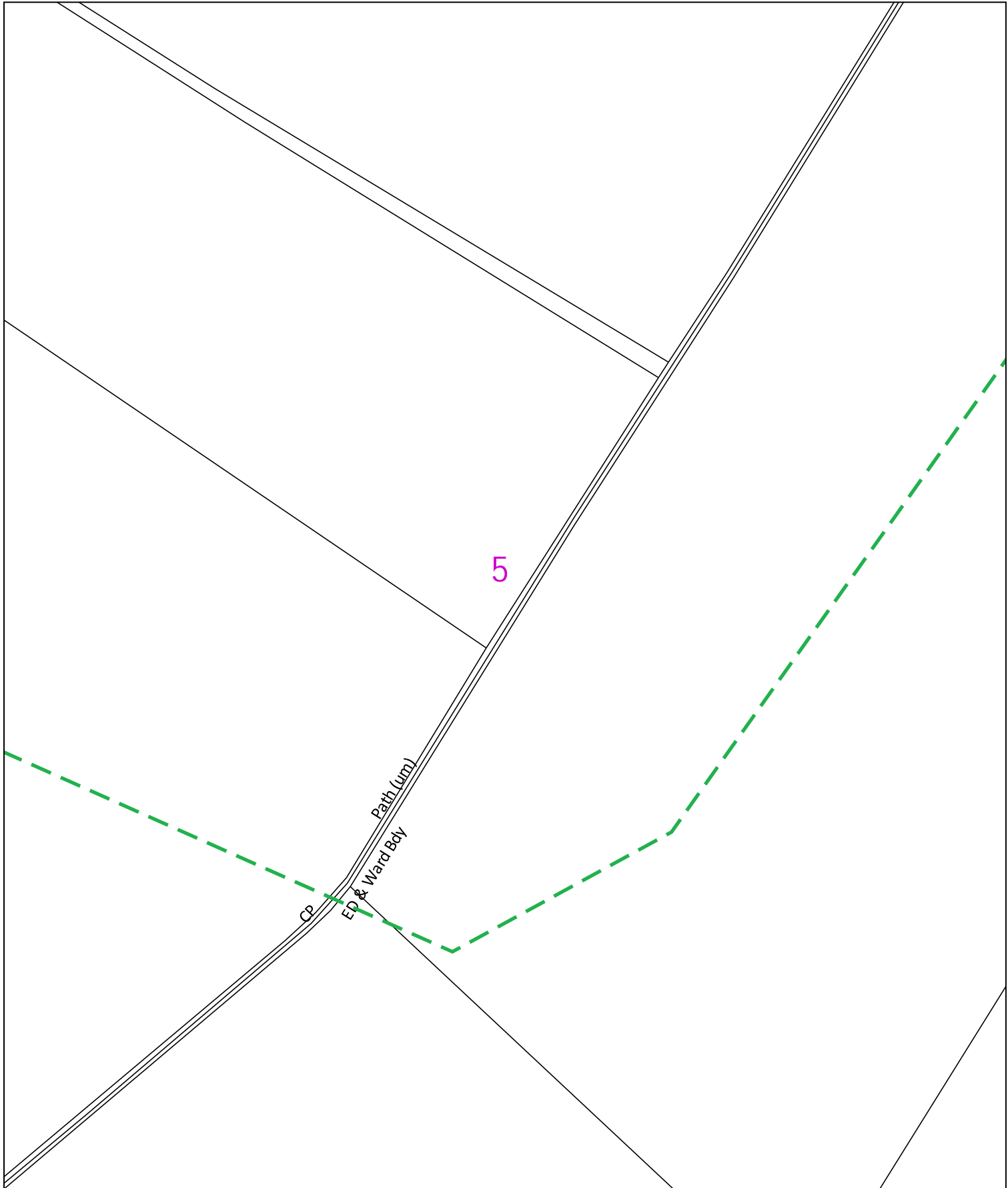
Scale: 1:1250 (When plotted at A4)

The information on this document is proprietary and shall not be used, copied, reproduced or disclosed in whole or in part without written consent of Neos Networks. Approximate location only is shown. To determine exact location a trial hole must be dug with a Neos Networks Supervisor present. Neos Networks accept no liability for errors or omissions.

Neos Networks Underground Route **Emergency Number: 0345 305 3337**



Registered Office:
Inveralmond House,
200 Dunkeld Road,
Perth, PH1 3AQ



0 50m

Dig Sites

Area:



Line:



The quality and accuracy of any print will depend on your printer, your computer and its print settings. Measurements scaled from this plan may not match measurements between the same points on the ground.

Date Requested: 28/06/2022
Job Reference: 26075879
Site Location: 591186 162498

Requested by: Mr Ben Evans

Your Scheme/Reference: LM
109528/SuC

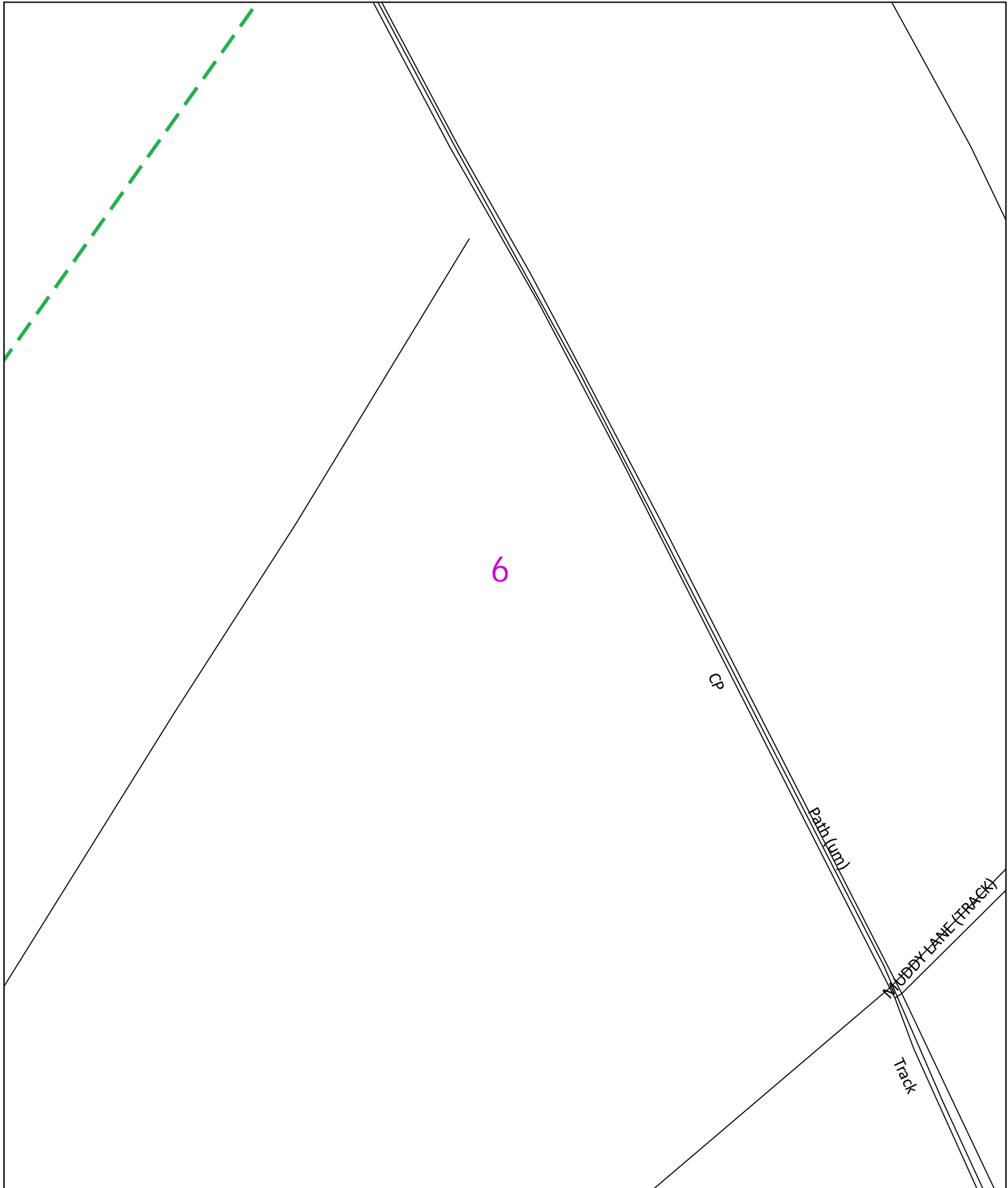
Scale: 1:1250 (When plotted at A4)

The information on this document is proprietary and shall not be used, copied, reproduced or disclosed in whole or in part without written consent of Neos Networks. Approximate location only is shown. To determine exact location a trial hole must be dug with a Neos Networks Supervisor present. Neos Networks accept no liability for errors or omissions.

Neos Networks Underground Route **Emergency Number: 0345 305 3337**



Registered Office:
Inverlmond House,
200 Dunkeld Road,
Perth, PH1 3AQ



0 50m Dig Sites Area: Line:

Date Requested: 28/06/2022
Job Reference: 26075879
Site Location: 591186 162498

Requested by: Mr Ben Evans

Your Scheme/Reference: LM
109528/SuC

Scale: 1:1250 (When plotted at A4)

The information on this document is proprietary and shall not be used, copied, reproduced or disclosed in whole or in part without written consent of Neos Networks. Approximate location only is shown. To determine exact location a trial hole must be dug with a Neos Networks Supervisor present. Neos Networks accept no liability for errors or omissions.

Neos Networks Underground Route **Emergency Number: 0345 305 3337**



Registered Office:
Inverlmond House,
200 Dunkeld Road,
Perth, PH1 3AQ