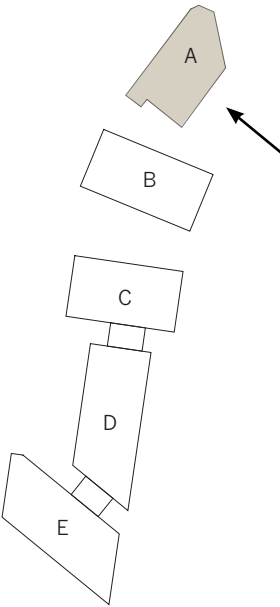
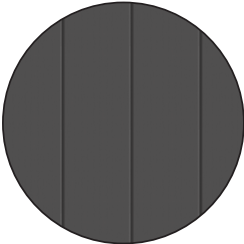


# External materiality/ Facade treatment - Block A



## MATERIAL PALETTE



DARK GREY METAL PANELLING



RED MULTI-STOCK BRICK TO EXISTING FLOUR MILL



SLATE ROOF TILES



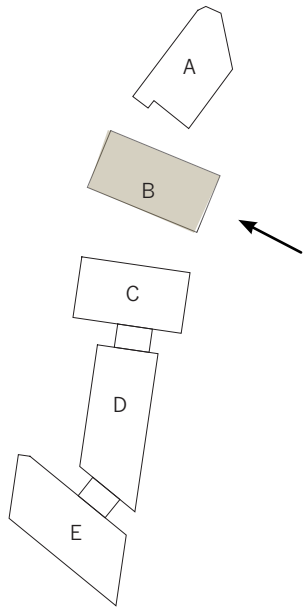
SEDUM/WILDFLOUR ROOF



# External materiality/ Facade treatment - Block B

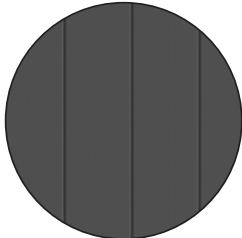
## KEY DESIGN PRINCIPLES

- The marteriality of block B seeks to express the transition between the existing historical structures on site and the new proposed structures which have been designed to compliment them
- The existing red multi-stock brickwork of the retained walls contrast with the dark metal cladding above
- The choice of materiality helps to delineate between the new and the old making the history of the site clearly visible
- Projecting balconies and cantilevers create visual interest and depth to the facade
- Perforated metal panels provide additional detail to the metal cladding

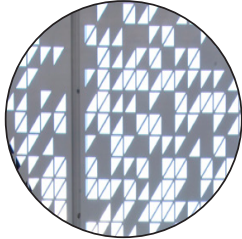


- CONTEMPORARY SHALLOW PITCHED DORMERS WITH LOUVRES TO REFLECT DORMER TO EXISITNG MILL BUILDING
- DARK GREY METAL PANELLING
- PERFORATED METAL PANELLING
- FEATURE CORNER WINDOW
- INDUSTRIAL STYLE STEEL BALCONY WITH GUARDING IN DARK GREY
- RED BRICK RETAINED EXISTING FACADE (DATED BETWEEN 1898 AND 1907)
- EXISTING BRICK WINDOW ARCH DETAIL

## MATERIAL PALETTE



DARK GREY METAL PANELLING



PERFORATED METAL PANELLING



RED MULTISTOCK BRICK TO EXISTING FLOUR MILL



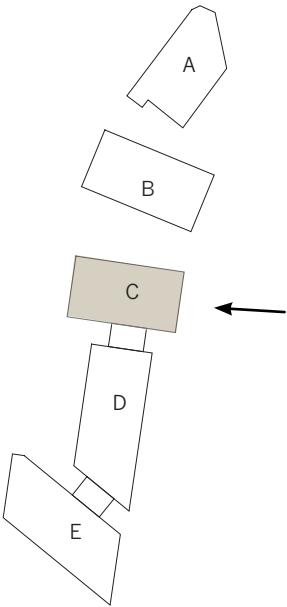
METAL POST & RAIL GUARDING



# External materiality/ Facade treatment - Block C

## KEY DESIGN PRINCIPLES

- Block C has a brick facade which is seen as a contemporary reinterpretation of the Mill building materiality.
- A contemporary exploration of brick is also explored through recessed brick detailing paired next to windows.
- Metal details to the dormers and bespoke metal panels are seen as a consistent material palette running through the scheme.
- Projecting balconies and cantilevers create interesting depth to the facade.



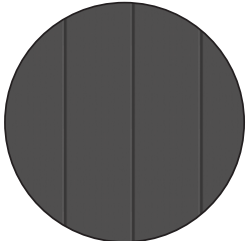
## MATERIAL PALETTE



RED STOCK BRICK



RECESSED BRICKWORK  
DETAIL



DARK GREY METAL  
PANELLING



METAL CONTEMPORARY GUARDING

CONTEMPORARY SHALLOW  
PITCHED DORMERS WITH  
LOUVRES TO REFLECT DORMER  
TO EXISITNG MILL BUILDING

RED STOCK BRICK

INDUSTRIAL STYLE  
STEEL BALCONY WITH  
GRATING IN DARK GREY

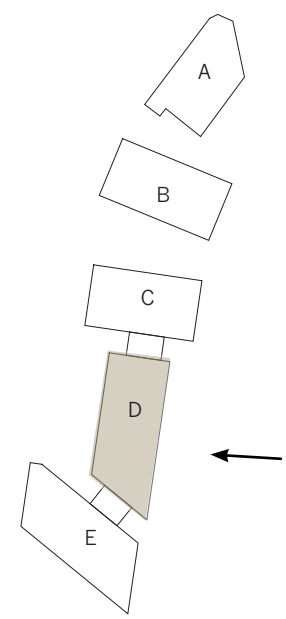
DECORATIVE RECESSED  
BRICK WORK DETAIL

FEATURE GLAZED  
CURTAIN WALLING TO  
GROUND FLOOR

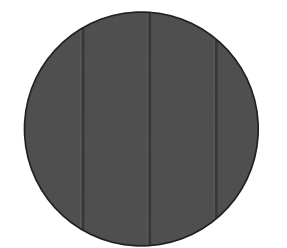


KEY DESIGN PRINCIPLES

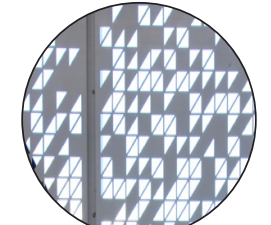
- Block D is comprised of a brickwork framing element explored through horizontal and vertical soldier course brick banding. The brick work is offset by metal clad panelling and grey guarding of the steel balconies.
- There is a hit and miss brick feature on the ground floor allowing for light to enter the under-croft parking area which also acts as a flood mitigation measure.



MATERIAL PALETTE



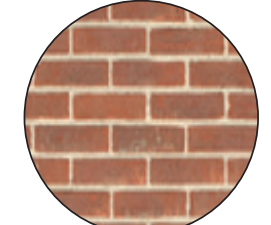
DARK GREY METAL PANELLING



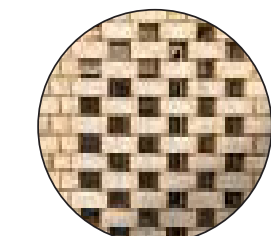
PERFORATED METAL PANELLING



METAL POST & RAIL GUARDING



RED STOCK BRICK



HIT AND MISS BRICK DETAIL

HIT AND MISS BRICK  
DETAIL TO UNDERCROFT  
CAR PARK

PERFORATED DARK GREY  
METAL PANELLING  
TO UNDERCROFT CAR  
PARKING

CLIMBING PLANTS

RED BRICK SOLDIER  
COURSE BANDING  
(VERTICAL &  
HORIZONTAL)

PERFORATED METAL  
PANELLING

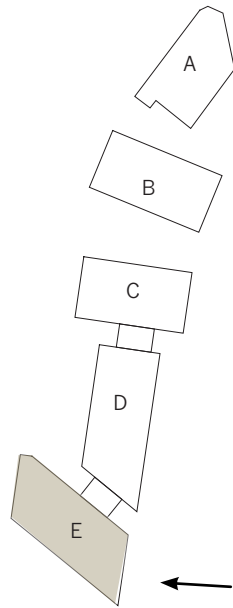
INSET INDUSTRIAL  
STEEL BALCONY WITH  
GUARDING IN DARK  
GREY



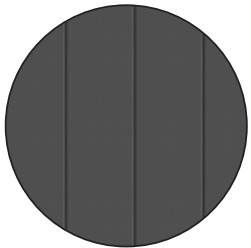
# External materiality/ Facade treatment - Block E

KEY DESIGN PRINCIPLES

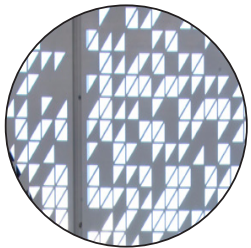
- Block E is clad in metal panels to compliment the red brick behind, the block acts as a bookend to the scheme.
- Recessed balconies, perferated metal panels, and cantilevers create visual interest and depth to the facade.



MATERIAL PALETTE



DARK GREY METAL  
PANELLING



PERFERATED METAL  
PANELLING



METAL POST & RAIL  
GUARDING



RED STOCK BRICK



RED MULTI-STOCK  
BRICK

DARK GREY METAL  
PANELLING

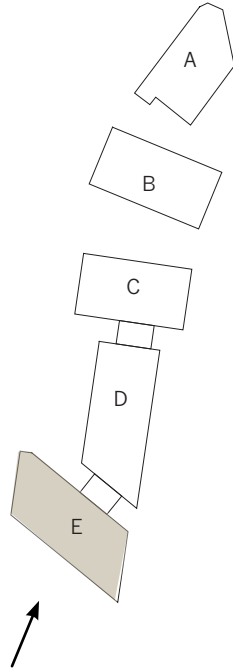
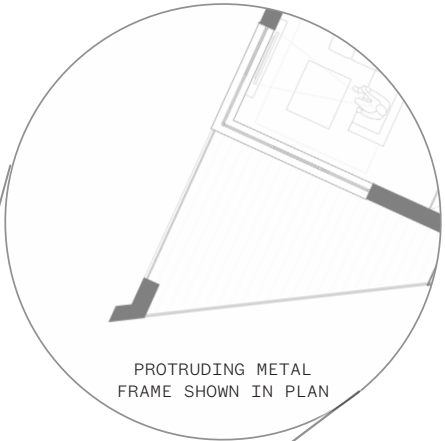
INSET INDUSTRIAL STYLE  
STEEL BALCONY WITH GUARDING  
IN DARK GREY

PERFORATED METAL  
PANELLING AROUND  
UNDER-CROFT CAR PARK

DARK GREY METAL  
PANELLING



# External materiality/ Facade treatment - Block E (continued)



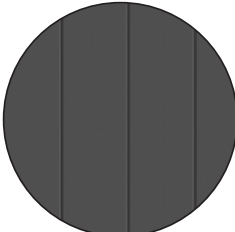
DECORATIVE RECESSED BRICK WORK DETAIL

PROTRUDING METAL FRAME IN DARK GREY

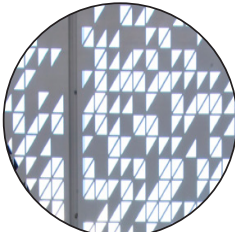
PERFORATED DARK GREY METAL PANELLING

DARK GREY METAL PANELLING

## MATERIAL PALETTE



DARK GREY METAL PANELLING



PERFORATED METAL PANELLING



METAL POST & RAIL GUARDING



RED STOCK BRICK



RECESSED BRICKWORK DETAIL



## 6. CGI Visuals



# CONCEPTUAL IMAGERY

View from Mace Lane (A292)





# CONCEPTUAL IMAGERY

View from East Hill





# CONCEPTUAL IMAGERY

View from East Hill

