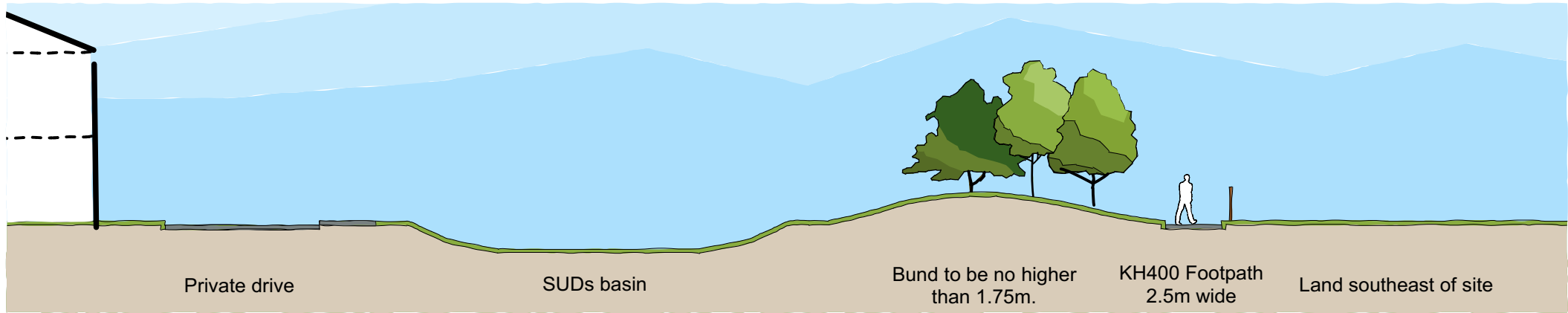
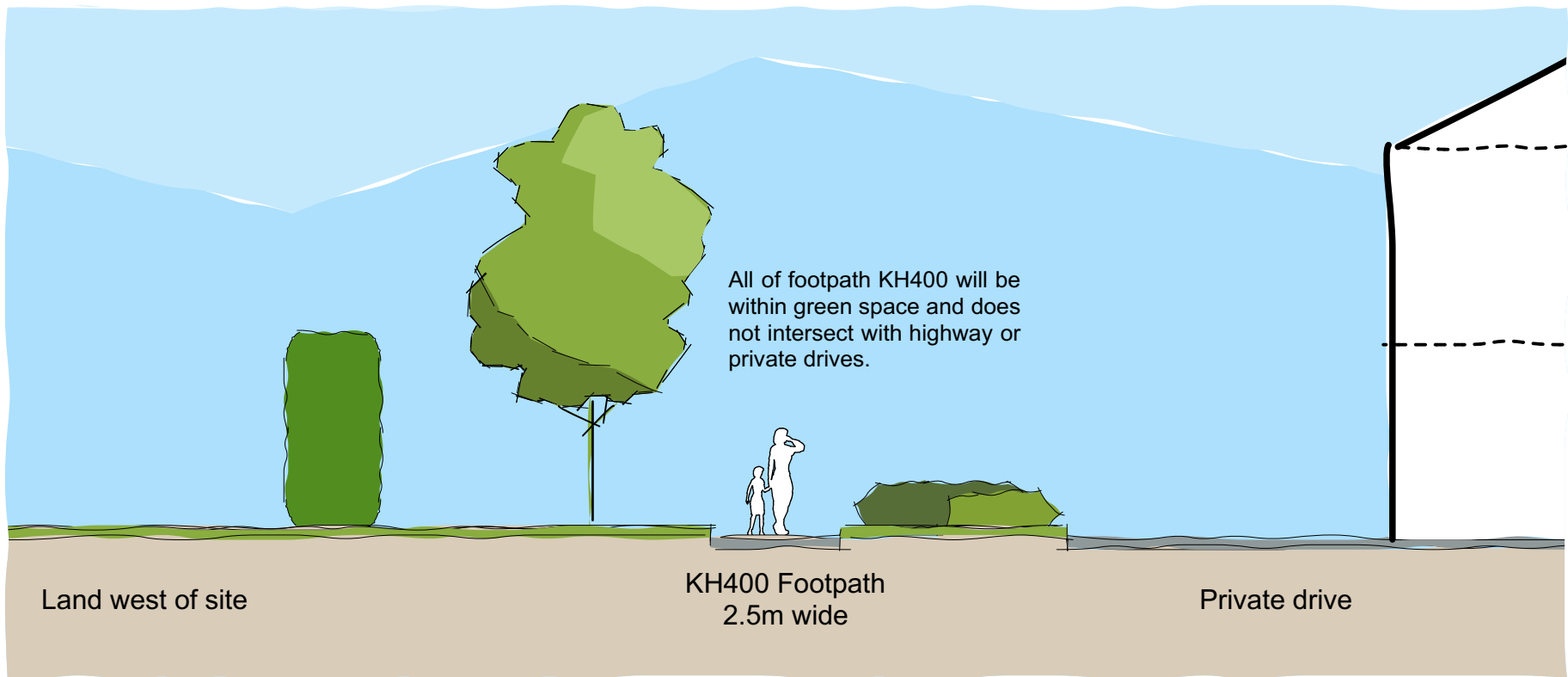


Section A - A
1:200 @ A3



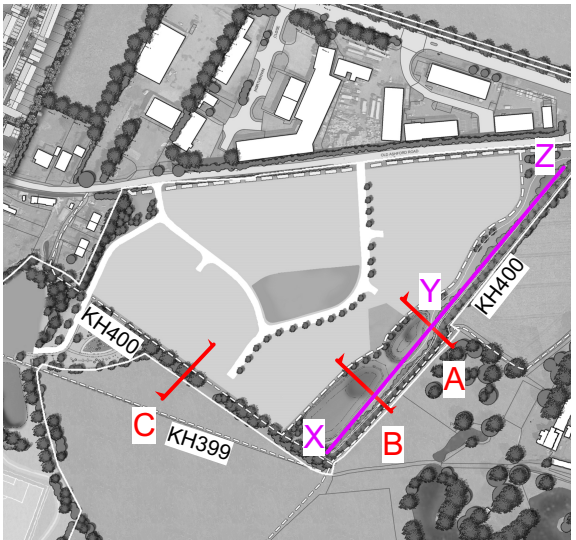
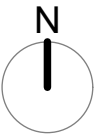
Section B - B
1:200 @ A3



Section C - C
1:100 @ A3

NOTES

This drawing is the property of FPCR Environment and Design Ltd and is issued on the condition it is not reproduced, retained or disclosed to any unauthorised person, either wholly or in part without written consent of FPCR Environment and Design Ltd.



Between points X and Y the proposed bund will be between 1m and 1.75m in height. Between points Y and Z the bund will be between 1.75 and 2.5m. Details of the above will be submitted to Maidstone Borough Council in consultation with Kent County Council public rights of way and access service.