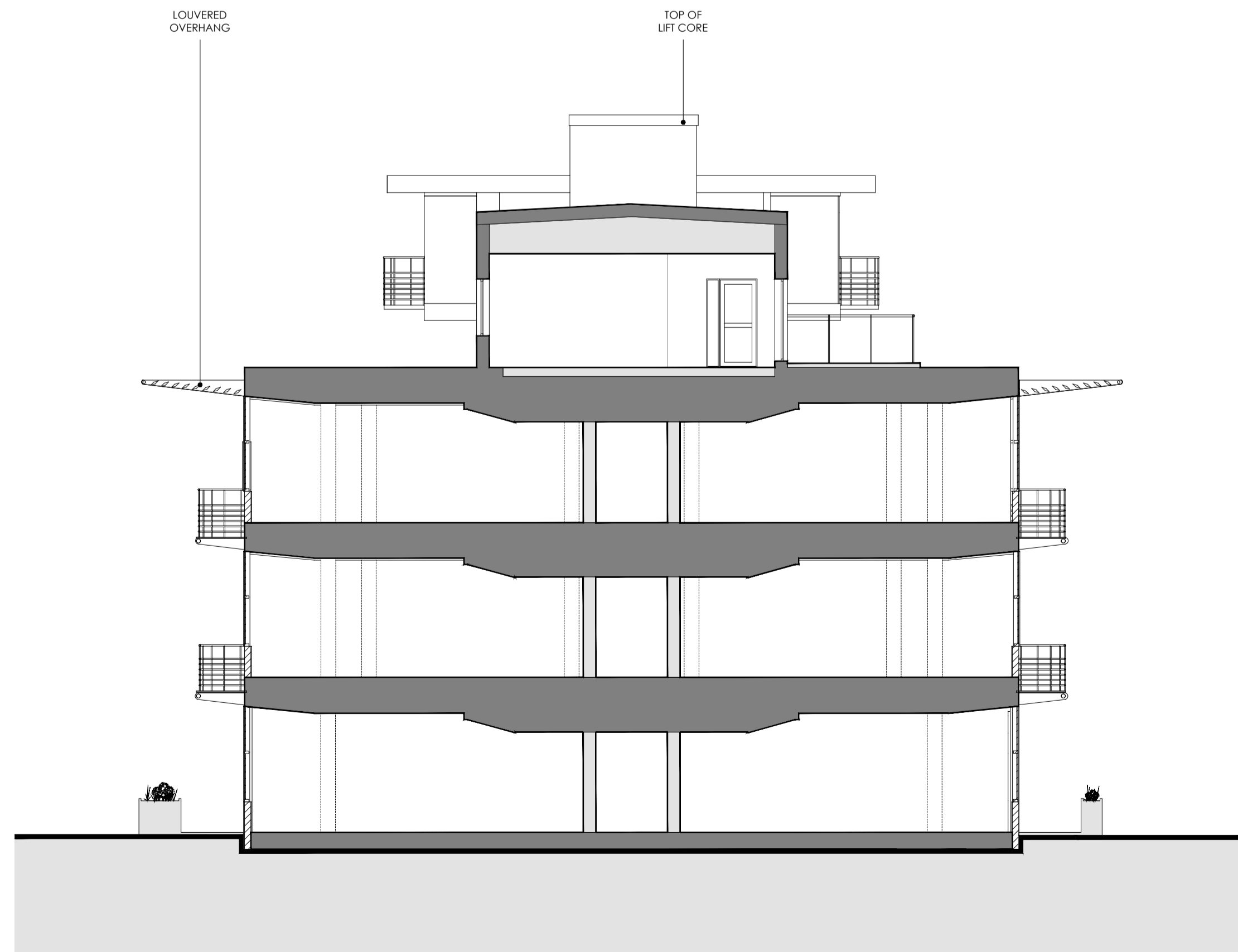
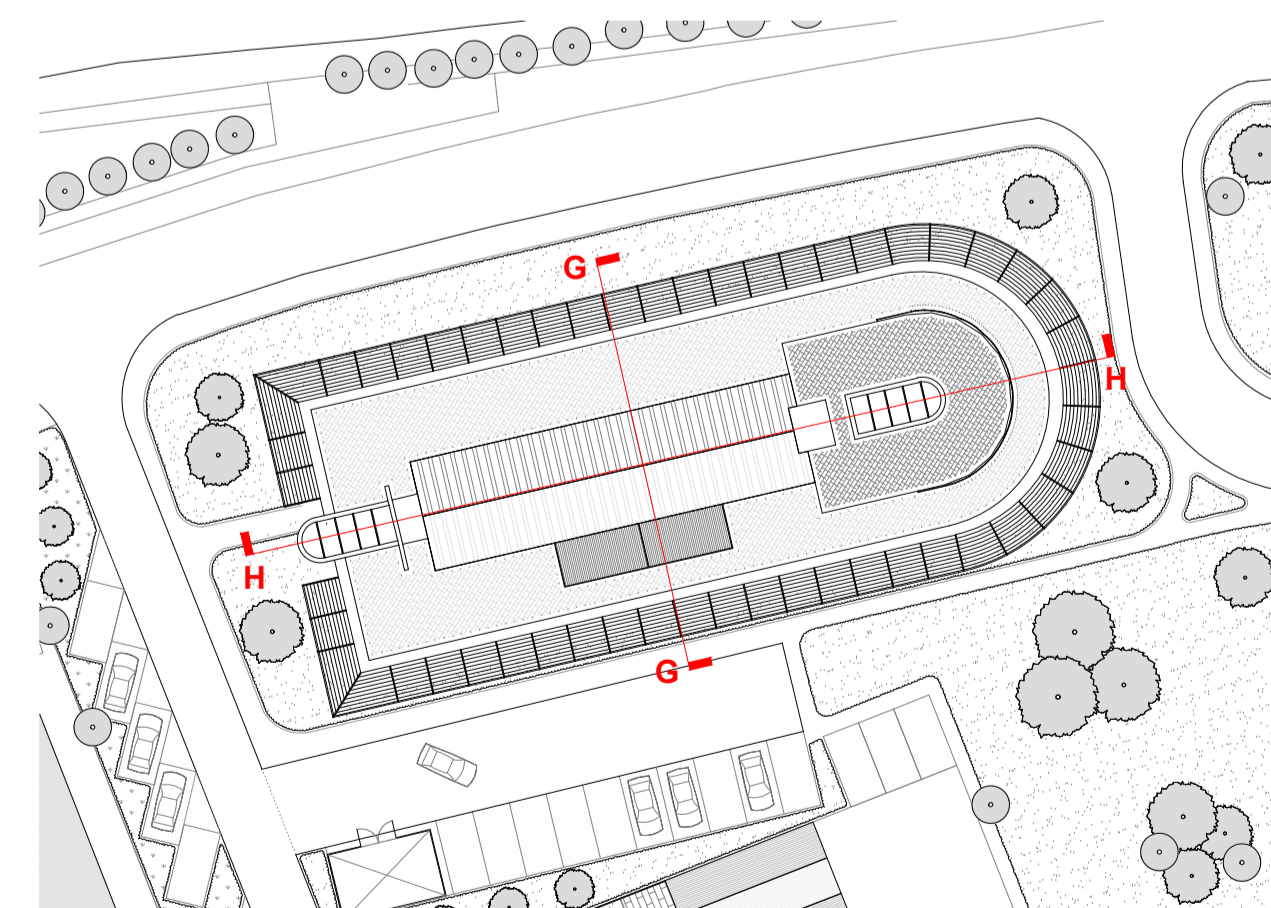


EXISTING SECTION H-H
SCALE 1:100 @ A1



EXISTING SECTION G-G
SCALE 1:100 @ A1



KEY PLAN
NOT TO SCALE

A Key plan update 04.05.23

Hollaway

London | 10a Acton Street | London | WC1X 9EG
T +44 (0) 20 7096 5425 | E london@hollawaystudio.co.uk | W www.hollawaystudio.co.uk
Kent | The Trowse Stables | Rampart Road | Ryde | Kent | CT21 5BG
T +44 (0) 1303 260 515 | E kent@hollawaystudio.co.uk | W www.hollawaystudio.co.uk

Project | CHERITON PARC
HIGH STREET, FOLKESTONE
Client | OLIVER DAVIS HOMES
Title | CHERITON PARC CONVERSION - PROPOSED SECTION G-G & H-H
Status | PLANNING

Scale@A1 | 1:100 Date | JAN 22 Drawn | RT Chk'd | MW

Project Number 21.081 Drawing Number 116 Revision A
Bin Number