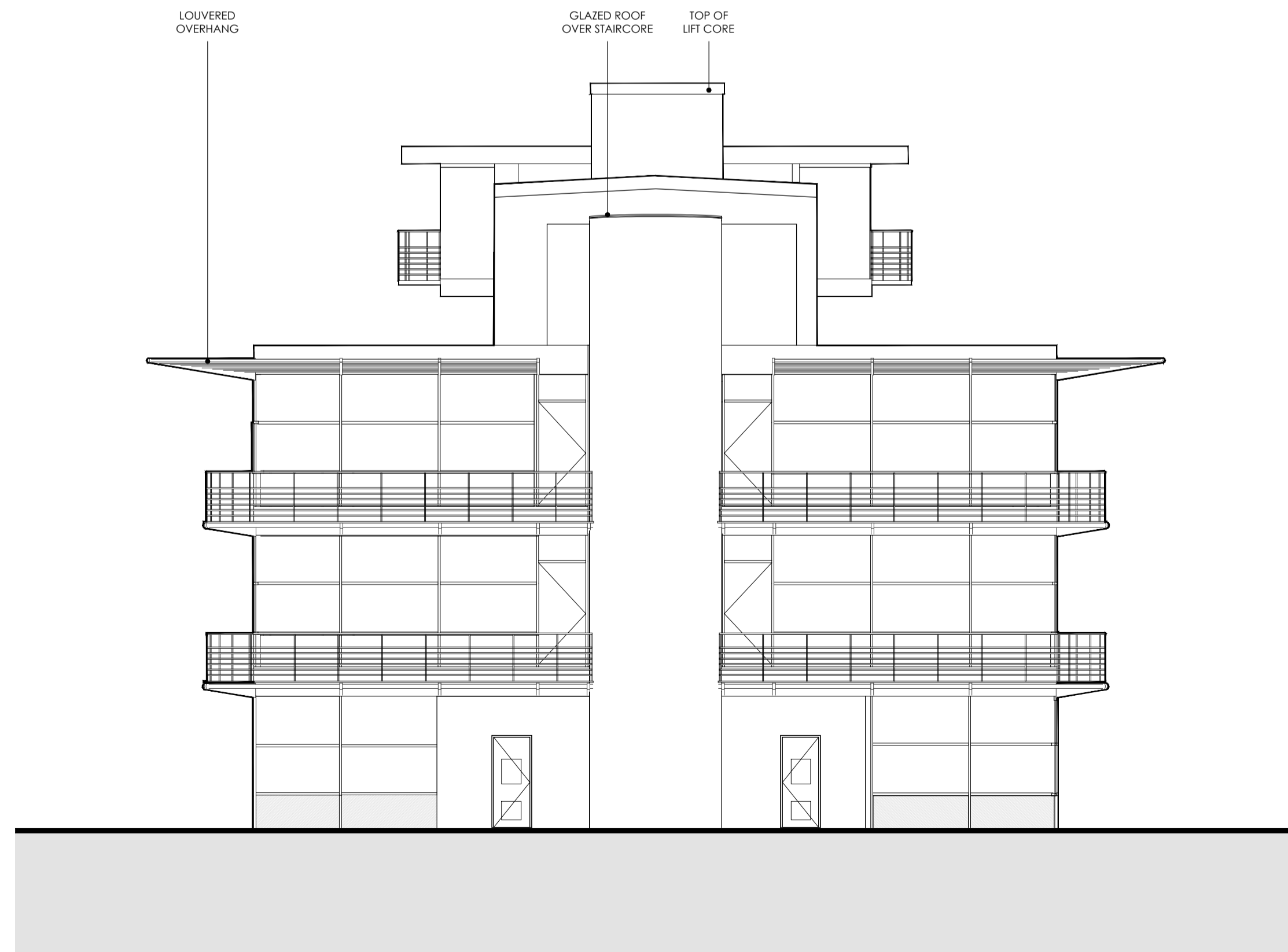
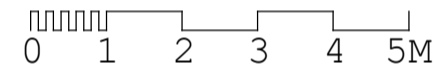
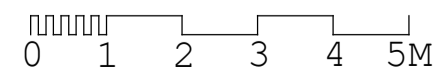


EXISTING ELEVATION D-D
SCALE 1:100 @ A1



EXISTING ELEVATION C-C
SCALE 1:100 @ A1



KEY PLAN
NOT TO SCALE

Hollaway

London | 10a Acton Street | London | W12 9EG
T +44 (0) 20 7096 5425 | Londonhollawaystudio.co.uk | www.hollawaystudio.co.uk

West | The Trenchy Stables | Rampart Road | Ryde | West | CT21 5BG
T +44 (0) 1303 265 513 | Westhollawaystudio.co.uk | www.hollawaystudio.co.uk

Project | CHERITON PARC
HIGH STREET, FOLKESTONE
Client | OLIVER DAVIS HOMES
Title | EXISTING ELEVATIONS C-C & D-D
Status | PLANNING

Scale@A1 | 1:100 Date | JAN 22 Drawn | RT Chk'd | MW

Project Number
21.081
Bin Number

Drawing Number
106

Revision
