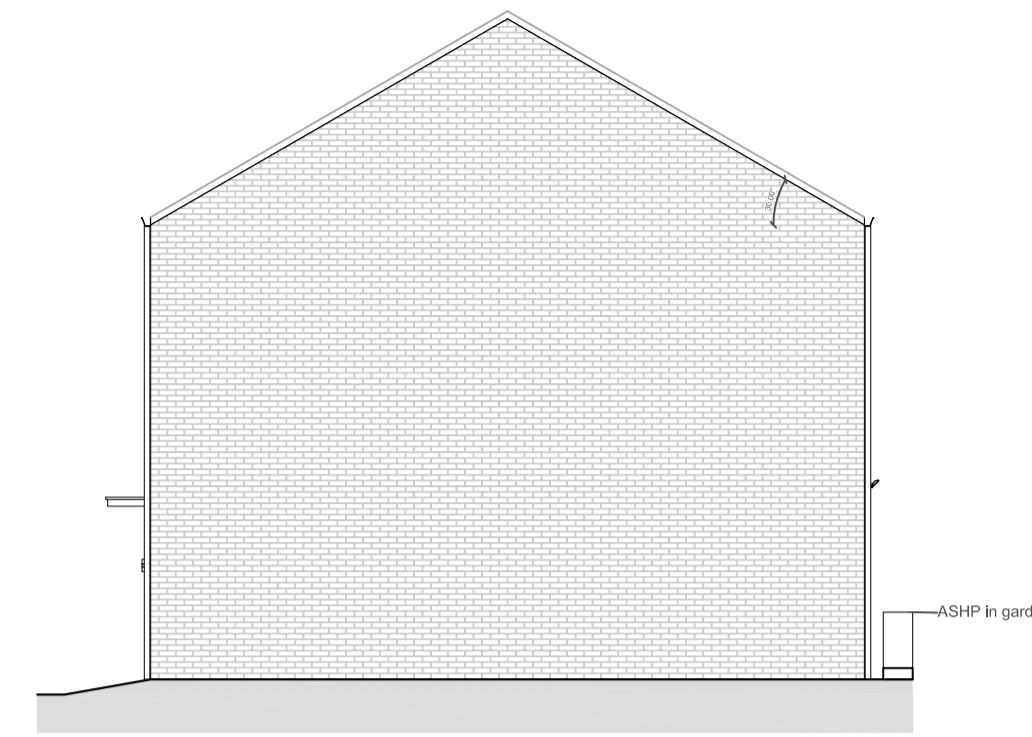


Rev	Description	Date	Revised By	Checked By
P01	Planning	24/08/2021	SA	MB
P02	Planning	17/12/2021	SA	MB

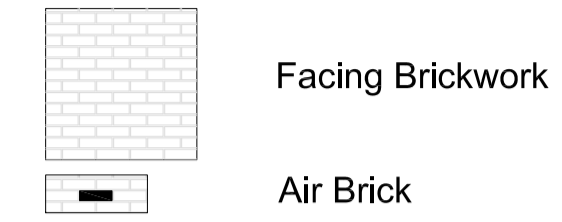


Front Elevation  
1:100



Right Elevation  
1:100

### Elevation Key



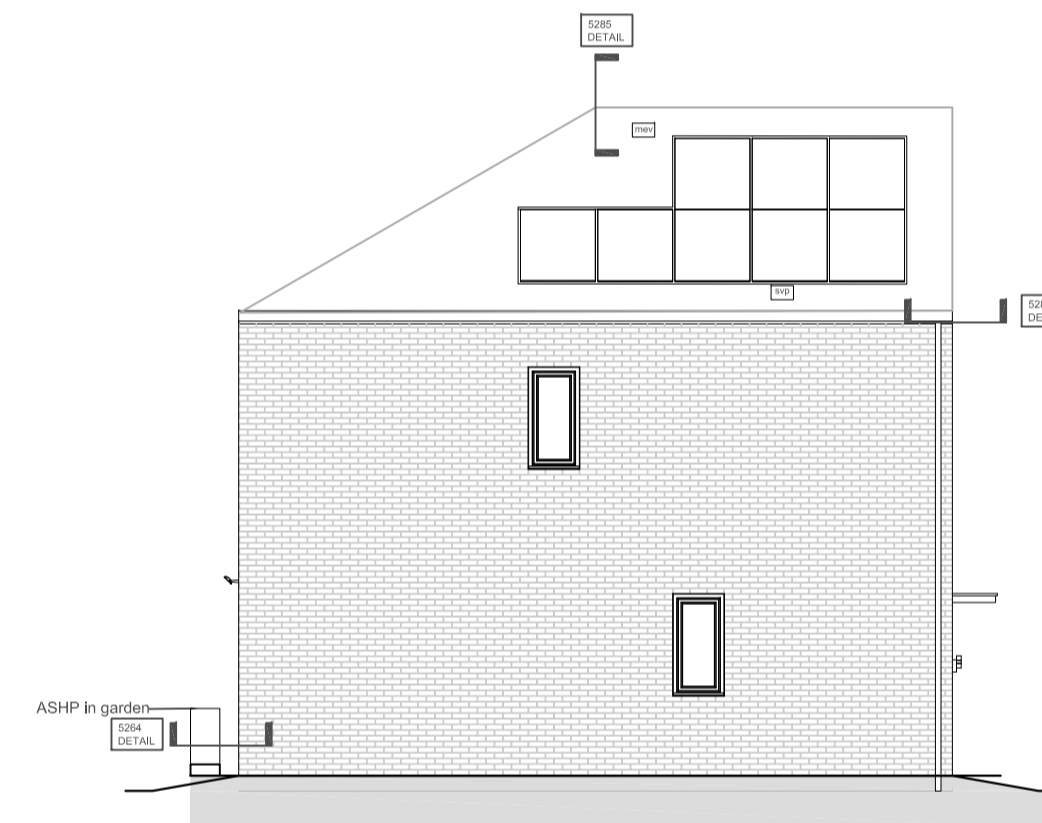
1. Brick and roof type indicated by plot and to be read in conjunction with Materials Plans.
2. Pitch 30° - unless stated
3. PV Shown indicatively, please see specialists details
4. Stretcher Bond coursing with Bucket Handle 10mm Mortar Joints, unless other specified

### Notes

1. Gable windows to be identified by plot number.
2. All drawings to be in conjunction with construction details and construction specification
3. All brick setting out is subject to site tolerances - Architect to approve the use of cut bricks and/or variation in mortar joints.
4. Movement joints in brickwork to structural engineer's requirements (shown on elevations) with any movement joints in substructure elements to comply with ADP Part A.
5. Roof structure and fire rated spandrel panels to be designed by specialist truss engineer for approval by Architect.
6. Principle contractor is responsible for all external ground levels. Please refer to Civil Engineer's drawings
7. All materials specified are to be installed to manufacturers recommendations and in line with building regulations, NHBC standards and relevant British/European standards.
8. Access point to be provided above ground to all downpipes
9. Ground levels to civil engineers drawings
10. All gutters to fall to outlets max 1:600 fall

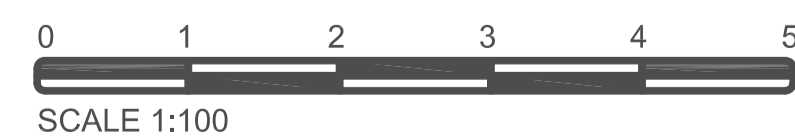


Rear Elevation  
1:100



Left Elevation  
1:100

Relates to Block - 6



Project Victoria Road West Littlestone	
Drawing Proposed Elevations Block 04	
Status S4 - For Stage Approval	
Scale @ A1 As Indicated	Date 24/08/2021
Drawn By SA	Checked By MB
Job No. 0058	Rev P02
Drawing No. 0058-LGMH-A3-EL-DR-A-2220	