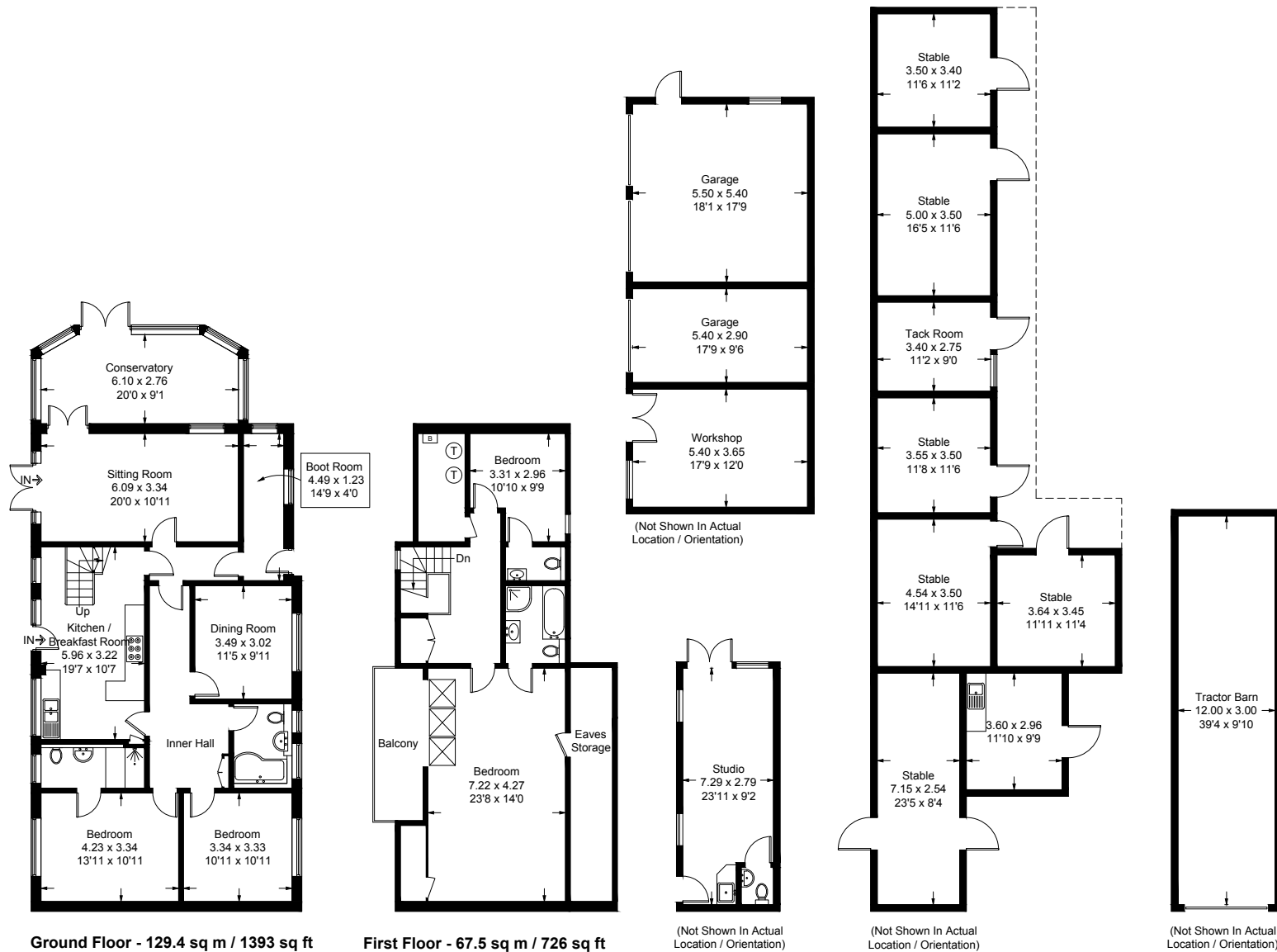


# Applecroft, Church Lane, West Stourmouth



Approximate Gross Internal Area = 196.9 sq m / 2119 sq ft

Outbuildings = 202.2 sq m / 2176 sq ft

(Including Garages / Excluding Tractor barn)

Total = 399.1 sq m / 4295 sq ft

This plan is for layout guidance only. Not drawn to scale unless stated. Windows and door openings are approximate. Whilst every care is taken in the preparation of this plan, please check all dimensions, shapes and compass bearings before making any decisions reliant upon them. (ID455660)

