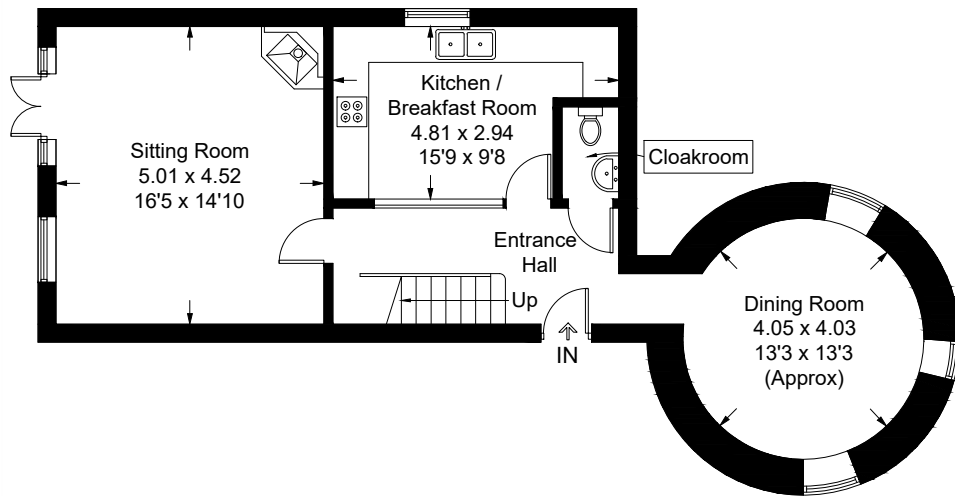
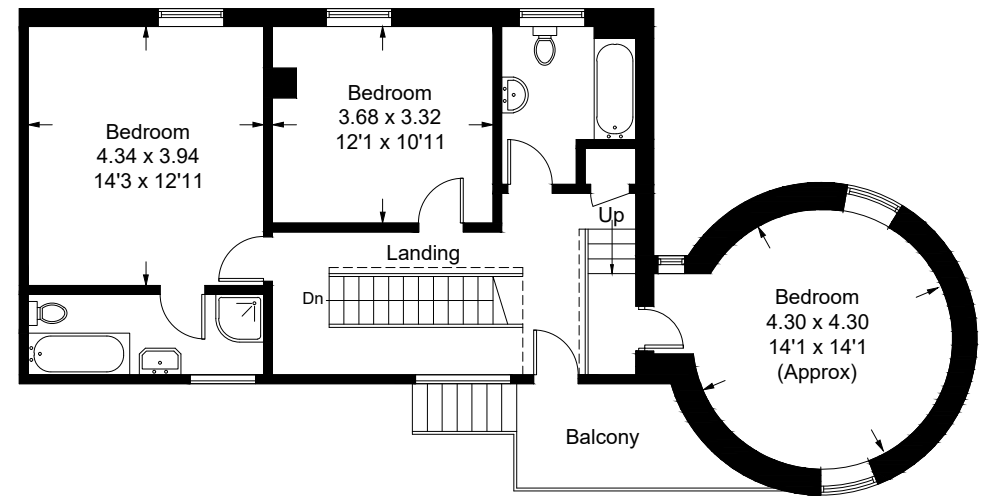


Lanary Oast, Bilsington



Ground Floor - 61.4 sq m / 661 sq ft



First Floor - 75.1 sq m / 808 sq ft

Approximate Gross Internal Area = 136.5 sq m / 1469 sq ft



This plan is for layout guidance only. Not drawn to scale unless stated. Windows and door openings are approximate. Whilst every care is taken in the preparation of this plan, please check all dimensions, shapes and compass bearings before making any decisions reliant upon them. (ID465969)