
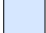
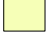



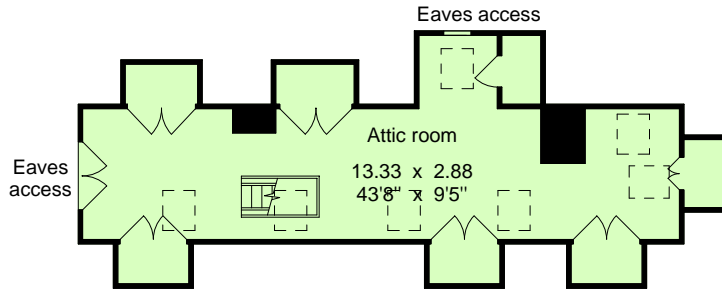


# Heronden Court, Tenterden

Gross internal area (approx.)

-  House - 471.5 sq m (5075 sq ft)
-  Garage - 22.4 sq m (241 sq ft)
-  Garage - 42.8 sq m (460 sq ft)
-  Pool House - 40.3 sq m (433 sq ft)

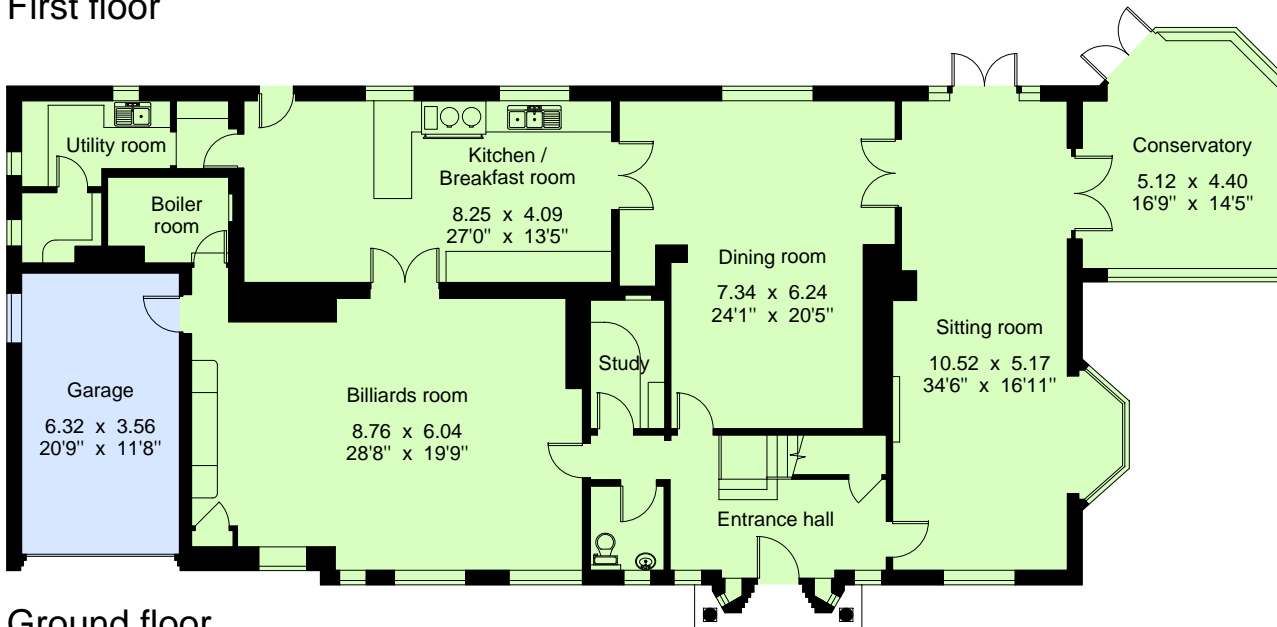
For identification only - Not to scale  
© Trueplan (UK) Limited



Second floor



First floor



Ground floor

